



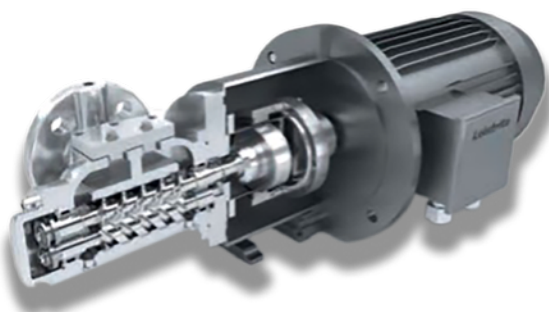
Taking Process Pumping Beyond Conventional Boundaries The Leistritz L2MG Pump Series

The Leistritz L2MG Pump Series is a game-changer in chemical applications where reliability, safety, and efficiency are paramount. For handling viscous fluids, positive displacement (PD) pumps, particularly screw pumps, offer significant advantages such as zero pulsation, smooth fluid handling, exceptional suction capacity, low noise, and wide flow span with VFD and speed control—all while maintaining high efficiency and availability.

External Bearing Twin Screw Pumps: Ideal for handling liquids with higher solid contents, gas fractions, and flow rates. However, they require at least four shaft seals and complex seal support systems, which can be costly, and use oil-lubricated timing gears for screw synchronization.

Internal Bearing Twin Screw Pumps: These pumps are simpler, requiring only one shaft seal and no timing gears. They offer multiple seal options, including a sealless magnetic coupling, making them suitable for hermetically closed systems in various chemical applications. Leistritz has been a leader in developing these innovations.

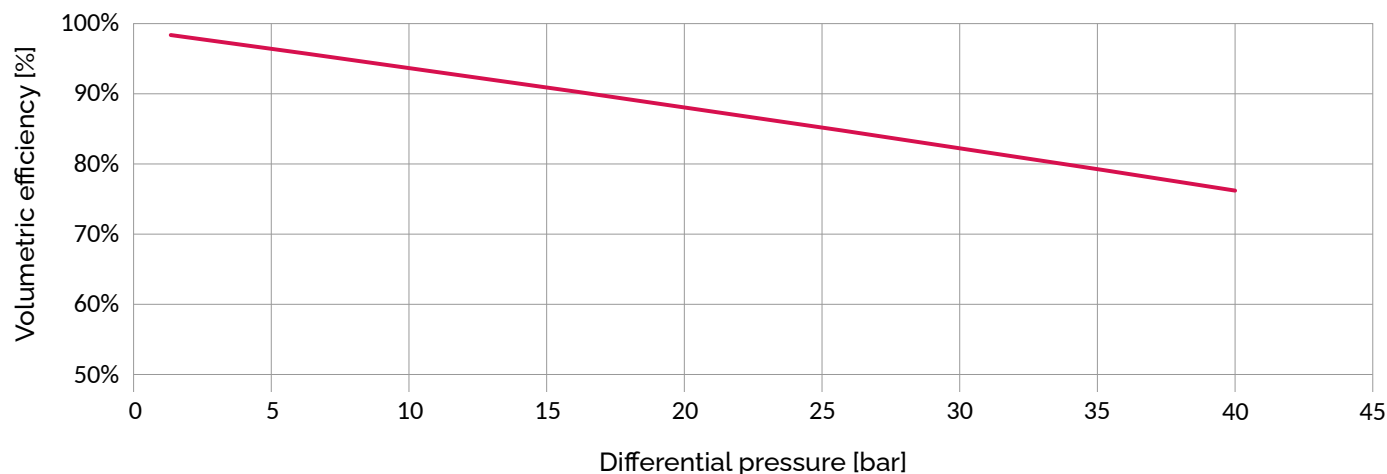
Pumping Isocyanates: Leistritz's magnetic-coupled internal bearing twin screw pumps have a proven track record in this application. However, for low-viscosity solvents like hexane or toluene, hydrodynamic bearings in internal bearing pumps necessitate higher viscosity, limiting their use. Until now, these left processes requiring solvent flushing, such as polymerization loops, to rely on complex and costly external bearing pumps with timing gears.



L2MG twin screw pump rendering

Volumetric efficiency of a LEISTRITZ L2MG

L2MG @ 1500 rpm



Curve showing volumetric efficiency of the L2mg

The Leistritz L2MG Pump Series: This new series seamlessly handles viscosities from 0.3 to 100,000 CST and delivers differential pressures up to 600 PSI. It optimizes processes, enhances efficiency, and ensures compliance with environmental and safety standards. Offering a choice between magnetic hermetic sealless drive and conventional mechanical shaft sealing, the L2MG series minimizes maintenance and reduces operating costs. Its high efficiency and minimal backflow make it ideal for shear-sensitive, non-Newtonian fluids, avoiding emulsification and molecular damage.

The L2MG series is set to revolutionize polymerization processes and other chemical applications, marking a significant leap forward in pump technology. Its development represents an achievement in efficiency, reliability, environmental friendliness, and lifecycle cost reduction that seemed unattainable just a few years ago.

Visit our website for more information and connect with us to discuss how we can elevate your business to new heights.



 www.leistritzcorp.com

 info@leistritzcorp.com

 201.934.8262